

## Series 1 FRLs

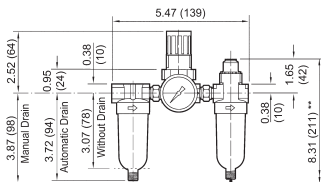
### P1A-Series Miniature Combination Units

#### Features

- 1 oz. reservoir
- Supplied with a GC620 gauge
- Transparent bowl

#### Specifications

- Inlet pressure **150 PSI** maximum
- Maximum temperature: **125°F (52°C)**
- Pressure range: **5-125 PSI**



\*\* minimum clearance to remove bowl



Port Size	Flow (SCFM)	Automatic Drain Part #	Manual Drain Part #
1/8"	10	P1A-100A	P1A-100M
1/4"	14	P1A-200A	P1A-200M

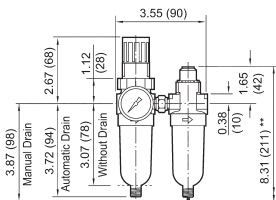
### PTH-Series Miniature Combination Units

#### Features

- Transparent bowl
- Requires only two pipe connections

#### Specifications

- Inlet pressure **150 PSI** maximum
- Maximum temperature: **125°F (52°C)**
- Pressure range: **5-125 PSI**



\*\* minimum clearance to remove bowl



Port Size	Flow (SCFM)	Automatic Drain Part #
1/8"	10	PTH-100AG
1/4"	14	PTH-200AG

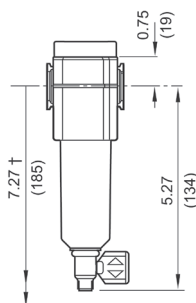
### F72-Series Sub-Compact Airline Filters

#### Features

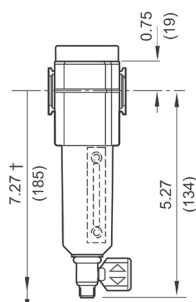
- Particle removal per ISO 8573-1, Class 5, and Class 3
- 40 micron element
- 2 oz. reservoir
- Quick-release bayonet bowl
- Prismatic lens liquid level indicator

#### Specifications

- Inlet pressure:
  - transparent bowl: max pressure **150 PSIG (10 bar)** and temperature range **-30°F to 125°F (-34°C to 50°C)**
  - metal bowl: max pressure **150 PSIG (10 bar)** and temperature range **-30°F to 150°F (-34°C to 66°C)**



† Minimum clearance to remove bowl



† Minimum clearance to remove bowl



with transparent bowl



with metal bowl

#### Transparent Bowl

Port Size	Flow (SCFM)	Semi-Automatic Drain Part #	Manual Drain Part #
1/4"	55	F72G-2A	F72G-2M

#### Metal Bowl and Sight Glass

Port Size	Flow (SCFM)	Semi-Automatic Drain Part #	Manual Drain Part #
1/4"	55	F72G-2A-MB	F72G-2M-MB

NOTE: SCFM ratings at 100 PSIG inlet pressure for regulators, 90 PSIG all others. FRLs are designed for air service only, unless otherwise indicated.