

Push-In Fittings

Applications:

- Water conditioning, filtration, reverse osmosis, soft drink, beer and condiment dispensing equipment where no metal contamination can be present.
- Industrial applications include low pressure pneumatic, hydraulic and vacuum lines commonly used in packaging systems, robotics, machine tools, agricultural spraying, car and industrial wash systems and air logic systems.

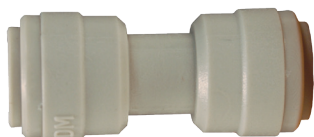
Features:

- material - acetal copolymer
- O-ring - nitrile rubber
- three piece construction, body, collet and O-ring pre-assembled
- Collets are produced with stainless steel locking teeth.
- Easy to install - no tools required. Easy to disconnect and reuse.
- temperature range: **-20°F (-20°C) to 185°F (85°C)**
- maximum water pressure: 1/4": **230 PSI**; 3/8" and 1/2": **170 PSI**

Standards:

- FDA complaint and NSF 51 listed non toxic material

Push-In Straight Unions



tube x tube

Tube OD	Acetal	
	Part #	Price/E
1/4"	462-4	\$3.40
3/8"	462-6	4.80
3/8" x 1/4"	462-64	4.65
1/2"	462-8	5.55
1/2" x 3/8"	462-86	5.60

Push-In Union Tees



tube x tube x tube

Tube OD		Acetal	
Run	Branch	Part #	Price/E
1/4"	1/4"	464-4	\$4.70
3/8"	3/8"	464-6	5.85
3/8"	1/4"	464-664	5.80
1/2"	1/2"	464-8	6.95
1/2"	3/8"	464-886	6.60

Push-In Hose Barb Connectors



tube x hose barb

Tube OD	Acetal	
	Part #	Price/E
1/4"	489-4	\$2.40
3/8"	489-6	3.05
1/2"	489-8	3.40