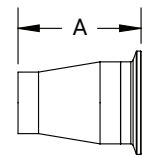


High Purity BioPharm Fittings

Clamp x Weld Concentric Reducers - 2226C

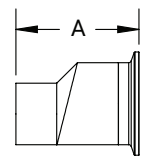
| Tube O.D. | A (in) | Nominal Wall (in) | PL Finish - SF1 | PM Finish - SF4 |
|-----------------|--------|-------------------|-----------------|-----------------|
| 3/4" x 1/2" | 2.625 | 0.065 | 2226CBB075050F1 | 2226CBB075050F4 |
| 1" x 1/2" | 3.000 | 0.065 | 2226CBB100050F1 | 2226CBB100050F4 |
| 1" x 3/4" | 2.625 | 0.065 | 2226CBB100075F1 | 2226CBB100075F4 |
| 1-1/2" x 3/4" | 3.500 | 0.065 | 2226CBB150075F1 | 2226CBB150075F4 |
| 1-1/2" x 1" | 3.000 | 0.065 | 2226CBB150100F1 | 2226CBB150100F4 |
| 2" x 1" | 3.875 | 0.065 | 2226CBB200100F1 | 2226CBB200100F4 |
| 2" x 1-1/2" | 3.000 | 0.065 | 2226CBB200150F1 | 2226CBB200150F4 |
| 2-1/2" x 1-1/2" | 3.875 | 0.065 | 2226CBB250150F1 | 2226CBB250150F4 |
| 2-1/2" x 2" | 3.000 | 0.065 | 2226CBB250200F1 | 2226CBB250200F4 |
| 3" x 1-1/2" | 4.750 | 0.065 | 2226CBB300150F1 | 2226CBB300150F4 |
| 3" x 2" | 3.875 | 0.065 | 2226CBB300200F1 | 2226CBB300200F4 |
| 3" x 2-1/2" | 3.125 | 0.065 | 2226CBB300250F1 | 2226CBB300250F4 |
| 4" x 2" | 5.750 | 0.065 | 2226CBB400200F1 | 2226CBB400200F4 |
| 4" x 2-1/2" | 4.875 | 0.065 | 2226CBB400250F1 | 2226CBB400250F4 |
| 4" x 3" | 4.500 | 0.065 | 2226CBB400300F1 | 2226CBB400300F4 |



ASME BPE 2019

Clamp x Weld Eccentric Reducers - 2226E

| Tube O.D. | A (in) | Nominal Wall (in) | PL Finish - SF1 | PM Finish - SF4 |
|-----------------|--------|-------------------|-----------------|-----------------|
| 3/4" x 1/2" | 2.625 | 0.065 | 2226EBB075050F1 | 2226EBB075050F4 |
| 1" x 1/2" | 3.000 | 0.065 | 2226EBB100050F1 | 2226EBB100050F4 |
| 1" x 3/4" | 2.625 | 0.065 | 2226EBB100075F1 | 2226EBB100075F4 |
| 1-1/2" x 3/4" | 3.500 | 0.065 | 2226EBB150075F1 | 2226EBB150075F4 |
| 1-1/2" x 1" | 3.000 | 0.065 | 2226EBB150100F1 | 2226EBB150100F4 |
| 2" x 1" | 3.875 | 0.065 | 2226EBB200100F1 | 2226EBB200100F4 |
| 2" x 1-1/2" | 3.000 | 0.065 | 2226EBB200150F1 | 2226EBB200150F4 |
| 2-1/2" x 1-1/2" | 3.875 | 0.065 | 2226EBB250150F1 | 2226EBB250150F4 |
| 2-1/2" x 2" | 3.000 | 0.065 | 2226EBB250200F1 | 2226EBB250200F4 |
| 3" x 1-1/2" | 4.750 | 0.065 | 2226EBB300150F1 | 2226EBB300150F4 |
| 3" x 2" | 3.875 | 0.065 | 2226EBB300200F1 | 2226EBB300200F4 |
| 3" x 2-1/2" | 3.125 | 0.065 | 2226EBB300250F1 | 2226EBB300250F4 |
| 4" x 2" | 5.750 | 0.065 | 2226EBB400200F1 | 2226EBB400200F4 |
| 4" x 2-1/2" | 4.875 | 0.065 | 2226EBB400250F1 | 2226EBB400250F4 |
| 4" x 3" | 4.500 | 0.065 | 2226EBB400300F1 | 2226EBB400300F4 |



ASME BPE 2019

NOTE: BPE 2019 Specifications

PL Finish – SF1

O.D. = 32Ra Mechanically Polished

I.D. = 20Ra Mechanically Polished

PM Finish – SF4

O.D. = 32Ra Mechanically Polished

I.D. = 15Ra Mechanically Polished and Electropolished